

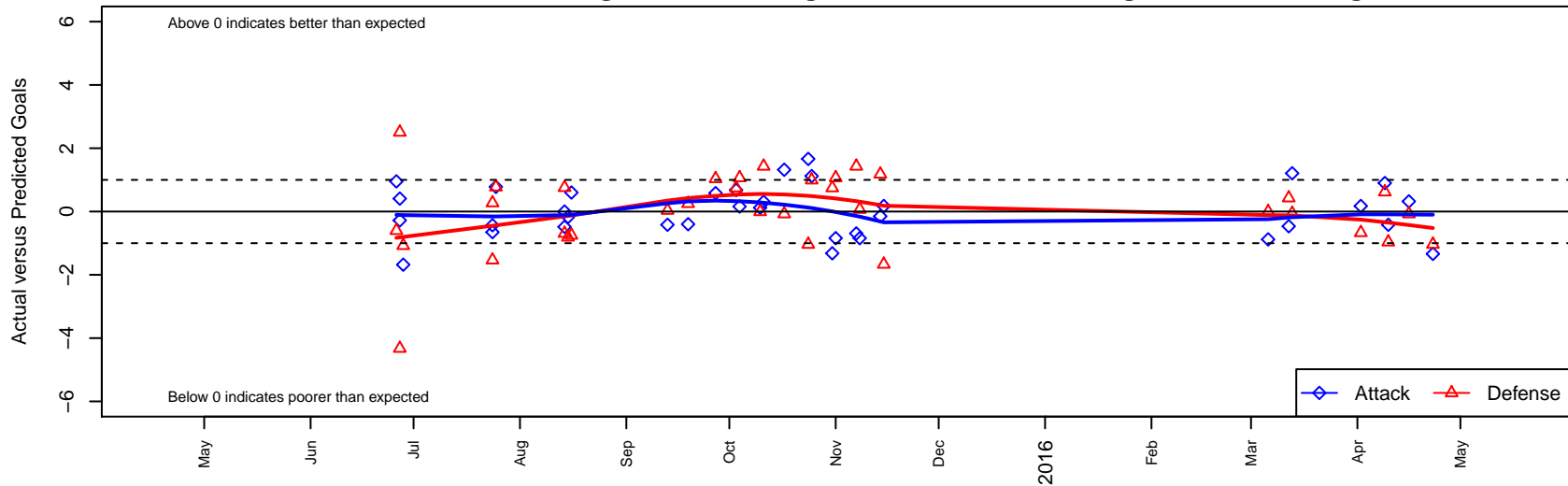
# Capital FC Timbers Black G03

Cascade Futbol Club/Capital FC  
 Salem, OR  
 G03 total strength=344  
 attack=0.19 defense=0.22  
 fall league = PTT G03 Div 2 White  
 spr league = Spr OYS G03 Div 2 White

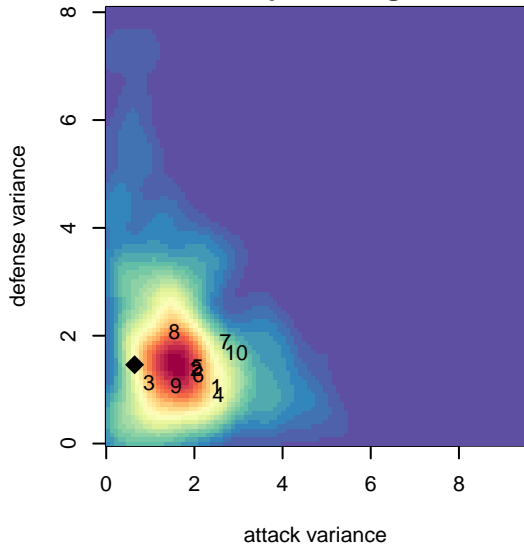
alt names used:  
 CAPITAL FC TIMBERS CAPITAL FC TIMERS  
 Capital FC Timbers G03 Black  
 CFC Timbers G03 Black  
 Capital FC Timbers Girls 2003 Black  
 Capital FC Timbers Girls 2003 Black  
 Capital FC Timbers Girls 2003 Black

Venues played:  
 2015 Capital Cup GU12  
 2015 Oswego Nike Cup Silver/Bronze U12  
 2015 Mt Hood Challenge U12  
 2015 PTT G03 Division 2 White  
 2015 OYS Founders Cup G03  
 2015 Spr OYS G03 Division 2 White

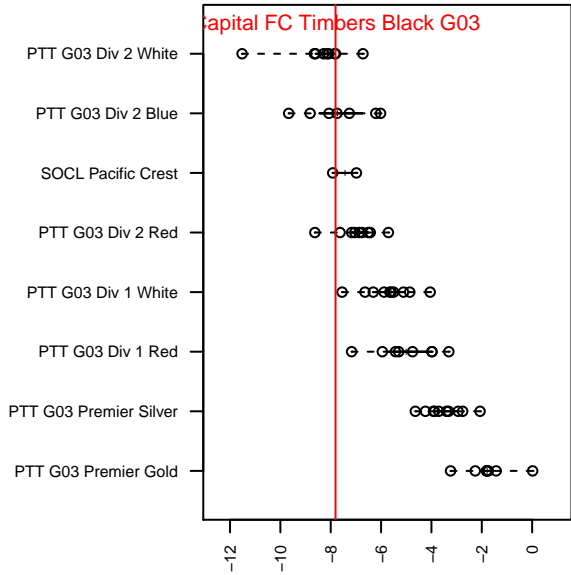
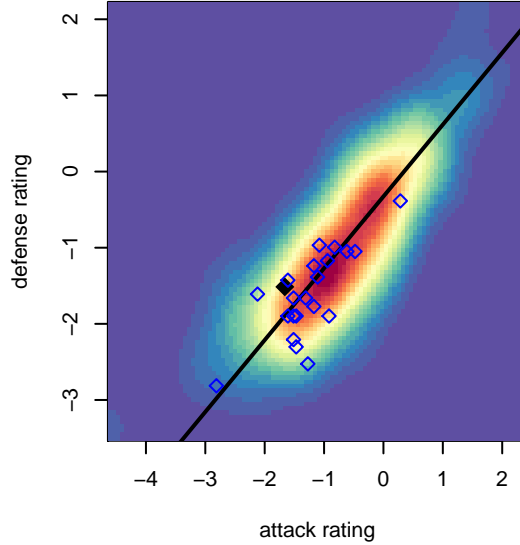
**Capital FC Timbers Black G03**  
 Dots are actual minus expected GF (blue circles) and GA (red triangles).  
 Blue line is smoothed change in attack strength. Red is smoothed change in defense strength.



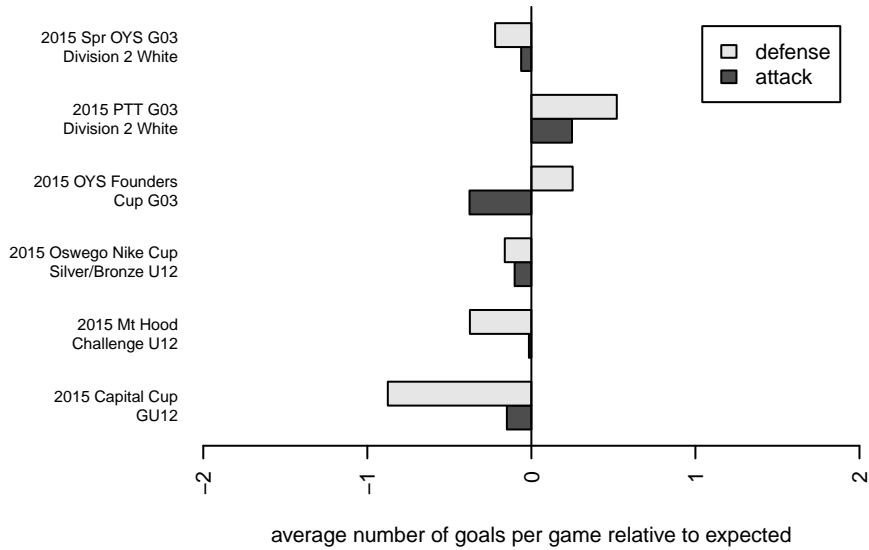
**attack and defense variance (black dot)  
relative to other teams  
and top 10 in region**



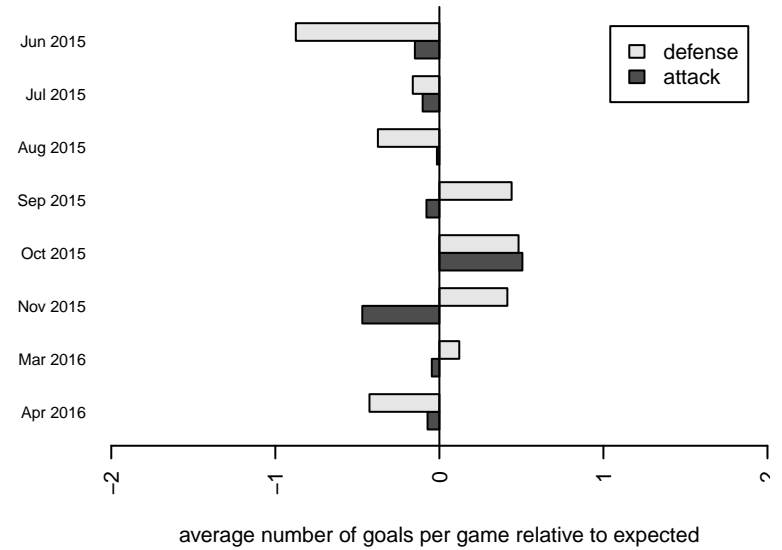
**attack and defense rating  
relative to others at age  
and all opponents in last 13 months**



**Performance relative to 13 month average**



**Performance relative to 13 month average**



| <b>date</b> | <b>home</b>                         |   | <b>away</b>                         |   | <b>venue</b>                      | <b>pred.home</b> | <b>pred.away</b> |
|-------------|-------------------------------------|---|-------------------------------------|---|-----------------------------------|------------------|------------------|
| 16-04-23    | Crossfire OR WUSC Juventus Navy G03 | 2 | Capital FC Timbers Black G03        | 0 | 2015 Spr OYS G03 Division 2 White | 0.96             | 1.34             |
| 16-04-16    | Capital FC Timbers Black G03        | 2 | CSC Storm White G03                 | 1 | 2015 Spr OYS G03 Division 2 White | 1.68             | 0.92             |
| 16-04-10    | THUSC Radium Black G03              | 2 | Capital FC Timbers Black G03        | 1 | 2015 Spr OYS G03 Division 2 White | 1.04             | 1.42             |
| 16-04-09    | Capital FC Timbers Black G03        | 2 | FSC Roses White G03                 | 0 | 2015 Spr OYS G03 Division 2 White | 1.10             | 0.62             |
| 16-04-02    | LYS Cascades G03                    | 2 | Capital FC Timbers Black G03        | 1 | 2015 Spr OYS G03 Division 2 White | 1.33             | 0.83             |
| 16-03-13    | Eastside Timbers Black G03          | 1 | Capital FC Timbers Black G03        | 2 | 2015 Spr OYS G03 Division 2 White | 0.94             | 0.79             |
| 16-03-12    | Capital FC Timbers Black G03        | 0 | Crossfire OR LOSC Liberty G03       | 1 | 2015 Spr OYS G03 Division 2 White | 0.47             | 1.43             |
| 16-03-06    | Capital FC Timbers Black G03        | 0 | Westside Timbers Mundial TS G03     | 1 | 2015 Spr OYS G03 Division 2 White | 0.88             | 0.99             |
| 15-11-15    | LYS Cascades G03                    | 3 | Capital FC Timbers Black G03        | 1 | 2015 OYS Founders Cup G03         | 1.33             | 0.83             |
| 15-11-14    | Capital FC Timbers Black G03        | 2 | West Hills G03                      | 0 | 2015 OYS Founders Cup G03         | 2.15             | 1.18             |
| 15-11-08    | FC Columbia County G03              | 1 | Capital FC Timbers Black G03        | 1 | 2015 OYS Founders Cup G03         | 1.07             | 1.84             |
| 15-11-07    | Capital FC Timbers Black G03        | 0 | BSC Portland Vapor G03              | 0 | 2015 OYS Founders Cup G03         | 0.69             | 1.43             |
| 15-11-01    | Capital FC Timbers Black G03        | 1 | FC Columbia County G03              | 0 | 2015 PTT G03 Division 2 White     | 1.84             | 1.07             |
| 15-10-31    | NEU PDX Silver G03                  | 0 | Capital FC Timbers Black G03        | 0 | 2015 PTT G03 Division 2 White     | 0.75             | 1.32             |
| 15-10-25    | Westside Timbers Mundial TS G03     | 0 | Capital FC Timbers Black G03        | 2 | 2015 PTT G03 Division 2 White     | 0.99             | 0.88             |
| 15-10-24    | Capital FC Timbers Black G03        | 3 | Crossfire OR WUSC Juventus Navy G03 | 2 | 2015 PTT G03 Division 2 White     | 1.34             | 0.96             |
| 15-10-17    | CSC Storm White G03                 | 1 | Capital FC Timbers Black G03        | 3 | 2015 PTT G03 Division 2 White     | 0.92             | 1.68             |
| 15-10-11    | Capital FC Timbers Black G03        | 1 | BSC Portland Vapor G03              | 0 | 2015 PTT G03 Division 2 White     | 0.69             | 1.43             |
| 15-10-10    | Capital FC Timbers Black G03        | 1 | Westside Timbers Mundial TS G03     | 1 | 2015 PTT G03 Division 2 White     | 0.88             | 0.99             |
| 15-10-04    | FC Columbia County G03              | 0 | Capital FC Timbers Black G03        | 2 | 2015 PTT G03 Division 2 White     | 1.07             | 1.84             |
| 15-10-03    | Capital FC Timbers Black G03        | 2 | NEU PDX Silver G03                  | 0 | 2015 PTT G03 Division 2 White     | 1.32             | 0.75             |
| 15-09-27    | THUSC Radium Black G03              | 0 | Capital FC Timbers Black G03        | 2 | 2015 PTT G03 Division 2 White     | 1.04             | 1.42             |
| 15-09-19    | FC West Force G03                   | 0 | Capital FC Timbers Black G03        | 3 | 2015 PTT G03 Division 2 White     | 0.25             | 3.40             |
| 15-09-13    | Capital FC Timbers Black G03        | 1 | THUSC Radium Black G03              | 1 | 2015 PTT G03 Division 2 White     | 1.42             | 1.04             |
| 15-08-16    | FC West Force G03                   | 1 | Capital FC Timbers Black G03        | 4 | 2015 Mt Hood Challenge U12        | 0.25             | 3.40             |
| 15-08-15    | FC Portland White G03               | 2 | Capital FC Timbers Black G03        | 1 | 2015 Mt Hood Challenge U12        | 1.19             | 1.17             |
| 15-08-14    | Capital FC Timbers Black G03        | 0 | CYSL Cougars G03                    | 2 | 2015 Mt Hood Challenge U12        | 0.49             | 2.76             |
| 15-08-14    | FC Nova Red -Unk G03                | 4 | Capital FC Timbers Black G03        | 0 | 2015 Mt Hood Challenge U12        | 3.31             | 0.00             |

| <b>date</b> | <b>home</b>                   |   | <b>away</b>                  |   | <b>venue</b>                           | <b>pred.home</b> | <b>pred.away</b> |
|-------------|-------------------------------|---|------------------------------|---|----------------------------------------|------------------|------------------|
| 2015-07-25  | THUSC Radium G03              | 1 | Capital FC Timbers Black G03 | 2 | 2015 Oswego Nike Cup Silver/Bronze U12 | 1.77             | 1.22             |
| 2015-07-24  | Crossfire OR LOSC Menace G03  | 2 | Capital FC Timbers Black G03 | 0 | 2015 Oswego Nike Cup Silver/Bronze U12 | 2.27             | 0.65             |
| 2015-07-24  | NEU PDX Blue G03              | 3 | Capital FC Timbers Black G03 | 0 | 2015 Oswego Nike Cup Silver/Bronze U12 | 1.47             | 0.43             |
| 2015-06-28  | Capital FC Timbers Black G03  | 0 | CSC Storm White G03          | 2 | 2015 Capital Cup GU12                  | 1.68             | 0.92             |
| 2015-06-27  | CSC Storm Navy G03            | 3 | Capital FC Timbers Black G03 | 0 | 2015 Capital Cup GU12                  | 5.50             | 0.28             |
| 2015-06-27  | Westside Timbers Samba TS G03 | 6 | Capital FC Timbers Black G03 | 1 | 2015 Capital Cup GU12                  | 1.67             | 0.59             |
| 2015-06-26  | Blackhills FC Black G03       | 2 | Capital FC Timbers Black G03 | 2 | 2015 Capital Cup GU12                  | 1.40             | 1.05             |